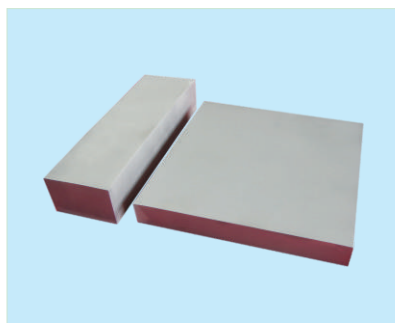
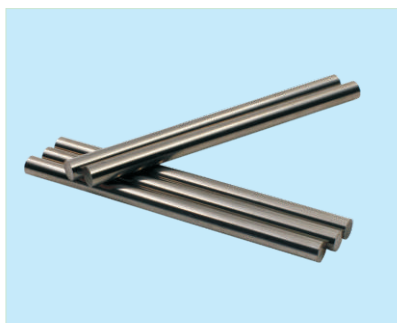




Non-magnetic carbide products



Features:

High hardness, good wear resistance, good polishability, small thermal expansivity, high thermal conductivity, good corrosion resistance

Application:

Instrument, water meter shaft, mold, shaft for pump, wear parts, punch

Physical and Mechanical properties:

Type	tensile Strength (Mpa)	Density(g/cm ³)	Hardness(HRC)
Zn11	3000 *	14.3	88.5
Zn14	3500 *	14.1	86.5

Non-magnetic cemented carbide rods:

Dimension (mm)	Diameter Tolerance(mm)	Length Tolerance(mm)	Dimension (mm)	Diameter Tolerance(mm)	Length Tolerance(mm)
Φ1.0×300/330	+0.2/+0.5	+0/+0.5	Φ6.0×300/330	+0.2/+0.5	+0/+0.5
Φ1.7×300/330	+0.2/+0.5	+0/+0.5	Φ6.5×300/330	+0.2/+0.5	+0/+0.5
Φ2.3×300/330	+0.2/+0.5	+0/+0.5	Φ7.0×300/330	+0.2/+0.5	+0/+0.5
Φ1.5×300/330	+0.2/+0.5	+0/+0.5	Φ7.5×300/330	+0.2/+0.5	+0/+0.5
Φ2.3×300/330	+0.2/+0.5	+0/+0.5	Φ8.0×300/330	+0.2/+0.5	+0/+0.5
Φ2.8×300/330	+0.2/+0.5	+0/+0.5	Φ8.5×300/330	+0.2/+0.5	+0/+0.5
Φ3.0×300/330	+0.2/+0.5	+0/+0.5	Φ9.0×300/330	+0.2/+0.5	+0/+0.5
Φ3.5×300/330	+0.2/+0.5	+0/+0.5	Φ9.5×300/330	+0.2/+0.5	+0/+0.5
Φ3.5×300/330	+0.2/+0.5	+0/+0.5	Φ10.0×300/330	+0.2/+0.5	+0/+0.5
Φ4.0×300/330	+0.2/+0.5	+0/+0.5	Φ10.5×300/330	+0.2/+0.5	+0/+0.5
Φ4.5×300/330	+0.2/+0.5	+0/+0.5	Φ11.0×300/330	+0.2/+0.5	+0/+0.5
Φ5.0×300/330	+0.2/+0.5	+0/+0.5	Φ11.3×300/330	+0.2/+0.5	+0/+0.5
Φ5.3×300/330	+0.2/+0.5	+0/+0.5	Φ11.5×300/330	+0.2/+0.5	+0/+0.5
Φ4.5×300/330	+0.2/+0.5	+0/+0.5	Φ12.0×300/330	+0.2/+0.5	+0/+0.5
Φ5.5×300/330	+0.2/+0.5	+0/+0.5	Φ12.5×300/330	+0.2/+0.5	+0/+0.5